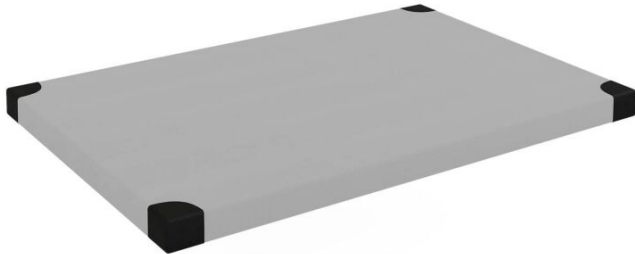




# School mattress, grey

## 4641729



### DESCRIPTION

Made of soft polyurethane foam, trimmed with artificial leather. Easy to clean. Cover contains hidden zipper and it is removable. The use of reinforced seams extends the life of the product, a special method of covering the zipper tape guarantees safe play, without the risk of getting caught on the metal part. The precision of the hems eliminates the creasing effect of the material. Security provides Oeko-Tex certificate. Dim.: L. 150 x W. 100 x H. 8 cm

### SHIPPING VOLUME

Color	
Size	
Gross weight (kg)	
Length (mm)	
Width (mm)	
Height (mm)	
Quantity of packages	
Shipping method	